

# EFT Processing

## For Sage Accpac ERP



- 💰 Do you process Receipts and/or Payments via Electronic Funds Transfer?
- 💰 Do you need to reduce your payment processing costs?
- 💰 Do you process Direct Debits from customers or Customer Refunds?

### What is EFT Processing?

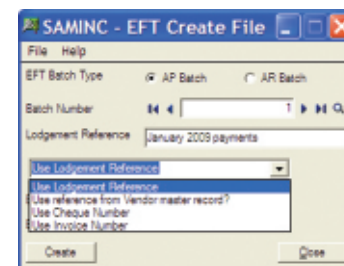
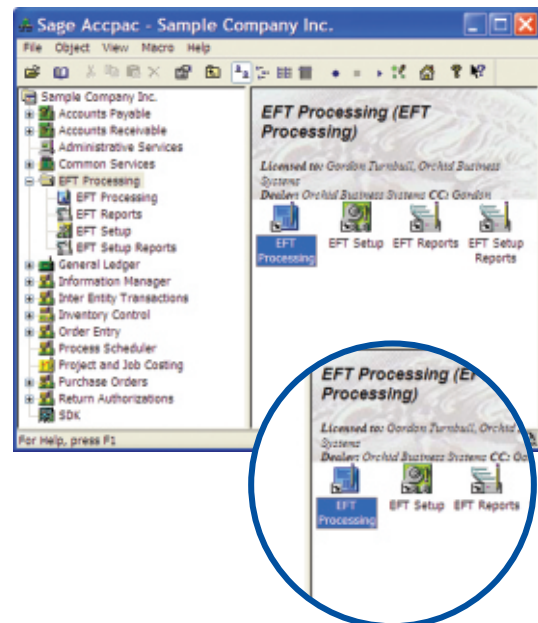
Developed by Orchid Systems, Electronic Funds Transfer (EFT) streamlines payment and collection processes and tightens control over bank transfers. EFT Processing transfers Accpac receipts and payments through to the electronic funds transfer functionality of your banking software.

### The Benefits of EFT Processing:

- Reduced bank transaction fees.
- Process both receipts and payments.
- No duplicated data entry, saving time and eliminating errors.
- Expensive check stationery not required.

### EFT Processing Features:

- Automatically creates EFT files required by the bank, for both payments and receipts.
- Creates Electronic Funds Transfer files in the format required by many major banks based on the standard Sage Accpac ERP Accounts Payable payment and customer refund routines.
- Creates Electronic Funds Transfer files for receipts (direct debits) from customers using receipt batches.
- Holds vendor and customer banking details.
- Works with numerous Bank formats worldwide. User definable Bank formats and screen labels to reflect Bank terminology.
- Summary transaction log.
- Audit log of changes to Vendor and Customer bank account details.
- Remittance advices can be emailed using standard Accpac functionality.
- Elect to work with posted or unposted batches.
- Automatically create customer receipts and bank files from AR invoices.
- Automatically create AR Receipts from transaction balances. Select by document date, due date, customer range, customer group, customer optional field.
- Ability to have an e-mail cc to keep copies of e-mail remittance advices.
- Select from a range of batches or selected entries within a batch.
- Approval process with enhanced security for customer and vendor bank accounts.
- When generating bank files, optionally elect to skip or error on vendors or customers who are not defined in EFT Processing.
- Developed in the Accpac SDK providing Accpac look & feel.
- Standard Accpac security, customization capabilities, data integrity checking, web mode and more!
- Runs on all databases supported by Accpac.



### Minimum Requirements:

EFT Processing 5.5 requires Sage Accpac ERP 100, 200 or 500 Version 5.5 Accounts Receivable and/or Accounts Payable.

All trademarks are registered trademarks or trademarks of their respective companies.



For further details contact your Sage Software Solution Provider...



2/273 Alfred Street, North Sydney, NSW, Australia, 2060  
Tel: +61-2-9925-0383 / Fax: +61-2-9955-3926  
www.orchidsystems.biz / info@orchidsystems.biz